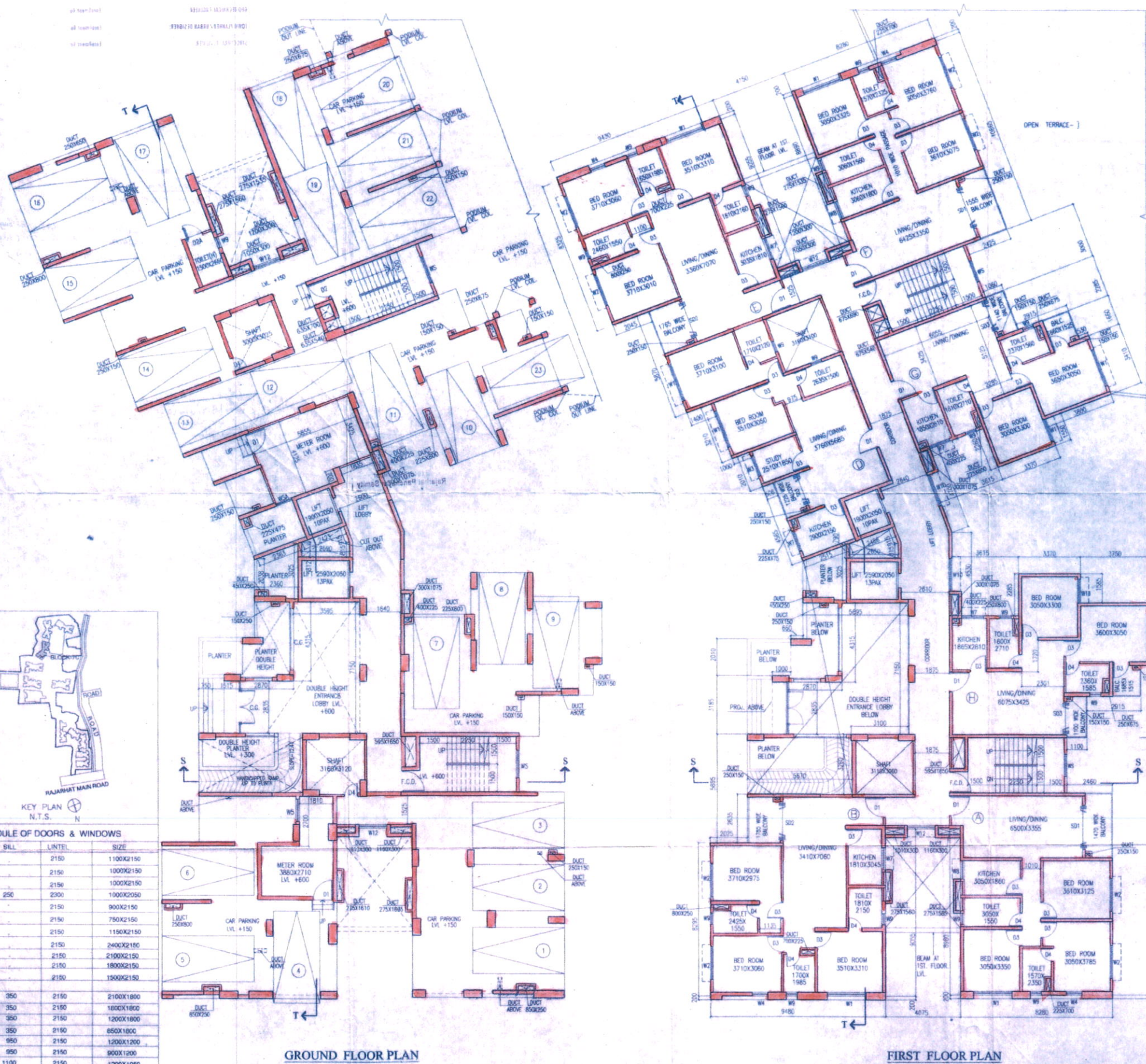


1. 1000000
2. 1000000
3. 1000000
4. 1000000
5. 1000000



SCHEDULE OF DOORS & WINDOWS			
NO.	SILL	LINTEL	SIZE
D1	2150	1100X2150	
D2	2150	1000X2150	
D2A	2150	1000X2150	
D2B	250	2300	1000X2050
D3	2150	900X2150	
D4	2150	750X2150	
F.C.D.	2150	1150X2150	
SD1	2150	2400X2150	
SD2	2150	2100X2150	
SD3	2150	1800X2150	
SD4	2150	1500X2150	
W1	350	2150	2100X1800
W2	350	2150	1800X1800
W3	350	2150	1200X1800
W4	350	2150	850X1800
W5	950	2150	1200X1200
W5A	950	2150	900X1200
W7	1100	2150	1200X1050
W8	1100	2150	1000X1050
W9	1250	2150	600X900
W10	750	2150	1800X1400
W11	750	2150	1500X1400
W12	350	2150	1200X1800
W13	350	2150	1200X1800
W14	950	2150	1200X1200

GROUND FLOOR PLAN

FIRST FLOOR PLAN

- NAME OF OWNER
1. BIRSA SALES PRIVATE LIMITED
 2. ANANDSILA DEALERS PRIVATE LIMITED
 3. ANANDSILA UP PRIVATE LIMITED
 4. ANANDSILA TOWER PRIVATE LIMITED
 5. ANANDSILA ESTATE PRIVATE LIMITED
 6. ANANDSILA COMPLEX PRIVATE LIMITED
 7. ANANDSILA HOUSING PRIVATE LIMITED
 8. ANANDSILA ENCLAVE PRIVATE LIMITED
 9. ANANDSILA PROMOTERS PRIVATE LIMITED
 10. ANANDSILA PROMOTERS PRIVATE LIMITED
 11. ANANDSILA COMMERCIAL PRIVATE LIMITED
 12. ANANDSILA ENCLAVE PRIVATE LIMITED
 13. ANANDSILA INFRASTRUCTURE PRIVATE LIMITED
 14. ANANDSILA REAL ESTATE PRIVATE LIMITED
 15. ANANDSILA TRADERS PRIVATE LIMITED
 16. ANANDSILA TRADERS PRIVATE LIMITED
 17. ANANDSILA TRADERS PRIVATE LIMITED
 18. ANANDSILA TRADERS PRIVATE LIMITED
 19. ANANDSILA TRADERS PRIVATE LIMITED
 20. ANANDSILA TRADERS PRIVATE LIMITED
 21. ANANDSILA TRADERS PRIVATE LIMITED
 22. ANANDSILA TRADERS PRIVATE LIMITED
 23. ANANDSILA TRADERS PRIVATE LIMITED
 24. ANANDSILA TRADERS PRIVATE LIMITED
 25. ANANDSILA TRADERS PRIVATE LIMITED
 26. ANANDSILA TRADERS PRIVATE LIMITED
 27. ANANDSILA TRADERS PRIVATE LIMITED
 28. ANANDSILA TRADERS PRIVATE LIMITED
 29. ANANDSILA TRADERS PRIVATE LIMITED
 30. ANANDSILA TRADERS PRIVATE LIMITED
 31. ANANDSILA TRADERS PRIVATE LIMITED
 32. ANANDSILA TRADERS PRIVATE LIMITED
 33. ANANDSILA TRADERS PRIVATE LIMITED
 34. ANANDSILA TRADERS PRIVATE LIMITED
 35. ANANDSILA TRADERS PRIVATE LIMITED
 36. ANANDSILA TRADERS PRIVATE LIMITED
 37. ANANDSILA TRADERS PRIVATE LIMITED
 38. ANANDSILA TRADERS PRIVATE LIMITED
 39. ANANDSILA TRADERS PRIVATE LIMITED
 40. ANANDSILA TRADERS PRIVATE LIMITED
 41. ANANDSILA TRADERS PRIVATE LIMITED
 42. ANANDSILA TRADERS PRIVATE LIMITED
 43. ANANDSILA TRADERS PRIVATE LIMITED
 44. ANANDSILA TRADERS PRIVATE LIMITED
 45. ANANDSILA TRADERS PRIVATE LIMITED
 46. ANANDSILA TRADERS PRIVATE LIMITED
 47. ANANDSILA TRADERS PRIVATE LIMITED
 48. ANANDSILA TRADERS PRIVATE LIMITED
 49. ANANDSILA TRADERS PRIVATE LIMITED
 50. ANANDSILA TRADERS PRIVATE LIMITED
 51. ANANDSILA TRADERS PRIVATE LIMITED
 52. ANANDSILA TRADERS PRIVATE LIMITED
 53. ANANDSILA TRADERS PRIVATE LIMITED
 54. ANANDSILA TRADERS PRIVATE LIMITED
 55. ANANDSILA TRADERS PRIVATE LIMITED
 56. ANANDSILA TRADERS PRIVATE LIMITED
 57. ANANDSILA TRADERS PRIVATE LIMITED
 58. ANANDSILA TRADERS PRIVATE LIMITED
 59. ANANDSILA TRADERS PRIVATE LIMITED
 60. ANANDSILA TRADERS PRIVATE LIMITED
 61. ANANDSILA TRADERS PRIVATE LIMITED
 62. ANANDSILA TRADERS PRIVATE LIMITED
 63. ANANDSILA TRADERS PRIVATE LIMITED
 64. ANANDSILA TRADERS PRIVATE LIMITED
 65. ANANDSILA TRADERS PRIVATE LIMITED
 66. ANANDSILA TRADERS PRIVATE LIMITED
 67. ANANDSILA TRADERS PRIVATE LIMITED
 68. ANANDSILA TRADERS PRIVATE LIMITED
 69. ANANDSILA TRADERS PRIVATE LIMITED
 70. ANANDSILA TRADERS PRIVATE LIMITED
 71. ANANDSILA TRADERS PRIVATE LIMITED
 72. ANANDSILA TRADERS PRIVATE LIMITED
 73. ANANDSILA TRADERS PRIVATE LIMITED
 74. ANANDSILA TRADERS PRIVATE LIMITED
 75. ANANDSILA TRADERS PRIVATE LIMITED
 76. ANANDSILA TRADERS PRIVATE LIMITED
 77. ANANDSILA TRADERS PRIVATE LIMITED
 78. ANANDSILA TRADERS PRIVATE LIMITED
 79. ANANDSILA TRADERS PRIVATE LIMITED
 80. ANANDSILA TRADERS PRIVATE LIMITED
 81. ANANDSILA TRADERS PRIVATE LIMITED
 82. ANANDSILA TRADERS PRIVATE LIMITED
 83. ANANDSILA TRADERS PRIVATE LIMITED
 84. ANANDSILA TRADERS PRIVATE LIMITED
 85. ANANDSILA TRADERS PRIVATE LIMITED
 86. ANANDSILA TRADERS PRIVATE LIMITED
 87. ANANDSILA TRADERS PRIVATE LIMITED
 88. ANANDSILA TRADERS PRIVATE LIMITED
 89. ANANDSILA TRADERS PRIVATE LIMITED
 90. ANANDSILA TRADERS PRIVATE LIMITED
 91. ANANDSILA TRADERS PRIVATE LIMITED
 92. ANANDSILA TRADERS PRIVATE LIMITED
 93. ANANDSILA TRADERS PRIVATE LIMITED
 94. ANANDSILA TRADERS PRIVATE LIMITED
 95. ANANDSILA TRADERS PRIVATE LIMITED
 96. ANANDSILA TRADERS PRIVATE LIMITED
 97. ANANDSILA TRADERS PRIVATE LIMITED
 98. ANANDSILA TRADERS PRIVATE LIMITED
 99. ANANDSILA TRADERS PRIVATE LIMITED
 100. ANANDSILA TRADERS PRIVATE LIMITED

CERTIFICATE OF STRUCTURAL ENGINEER

CERTIFY THAT THE STRUCTURAL DRAWING AND DESIGN OF BOTH THE FOUNDATION AND SUPERSTRUCTURE OF THE BUILDING/BUILDINGS HAS BEEN MADE CONSIDERING THE SOIL TEST REPORT AS PER THE RULES AND REGULATIONS MADE UNDER THE ACT AND ALSO CONSIDERING ALL POSSIBLE LOADS, SEISMIC LOAD AND THE MOMENTS GENERATED BY THE PROPOSED STRUCTURE AS PER THE BUREAU OF INDIAN STANDARD AND NATIONAL BUILDING CODE OF INDIA AND CERTIFIED THAT IT IS SAFE AND STABLE IN ALL RESPECT AND THESE PROVISIONS SHALL BE ADHERED TO DURING THE CONSTRUCTION.

(Signature)
M. Anand, B.C.E., I.C.E. (S)
No. 1000000 of CMC
1000000 of CMC
1000000 of CMC

SIGNATURE OF STRUCTURAL ENGINEER

CERTIFICATE OF ARCHITECT

I CERTIFY THAT ALL THE ARCHITECTURAL DRAWINGS OF THE PROJECT AT R.S.L.R. DAG NOS. 615(P), 620, 621, 622, 623, 624, 625, 627, 628, 629(P), 630(P), 631(P), 632(P), 640, 641, 642, 643, 644, 645, 646, 647, 648, 649, 650(P), 651(P), 652(P), 653, 654, 655, 656, 657, 658(P), 659(P) & 698/734 RECORDED UNDER L.R. KHATAN NOS. 2022, 2023, 2024, 2025, 2193, 2194, 2195, 2196, 2197, 2198, 2199, 2200, 2201, 2202, 2203, 2204, 2205, 2206, 2207, 2208, 2209, 2210, 2211, 2212, 2213, 2214, 2444, 2445, 2446, 2447, 2448, 2449, 2450, 2451, 2452, 2453, 2454, 2473, 2457, 2515, 2723, 2774, 2820, 2821, 2842, 2843, 2844, 2845, 2846, 2847, 2857, 2858, 2859, 2860, 2861, 2862, 2863, 2864, 2865, 2866, 2867, 2868, 2869, 2870, 2871, 2872, 2873, 2874, 2875, 2876, 2877, 2878, 2879, 2880, 2881, 2882, 2883, 2884, 2885, 2886, 2887, 2888, 2889, 2890, 2891, 2892, 2893, 2894, 2895, 2896, 2897, 2898, 2899, 2900, 2901, 2902, 2903, 2904, 2905, 2906, 2907, 2908, 2909, 2910, 2911, 2912, 2913, 2914, 2915, 2916, 2917, 2918, 2919, 2920, 2921, 2922, 2923, 2924, 2925, 2926, 2927, 2928, 2929, 2930, 2931, 2932, 2933, 2934, 2935, 2936, 2937, 2938, 2939, 2940, 2941, 2942, 2943, 2944, 2945, 2946, 2947, 2948, 2949, 2950, 2951, 2952, 2953, 2954, 2955, 2956, 2957, 2958, 2959, 2960, 2961, 2962, 2963, 2964, 2965, 2966, 2967, 2968, 2969, 2970, 2971, 2972, 2973, 2974, 2975, 2976, 2977, 2978, 2979, 2980, 2981, 2982, 2983, 2984, 2985, 2986, 2987, 2988, 2989, 2990, 2991, 2992, 2993, 2994, 2995, 2996, 2997, 2998, 2999, 3000, 3001, 3002, 3003, 3004, 3005, 3006, 3007, 3008, 3009, 3010, 3011, 3012, 3013, 3014, 3015, 3016, 3017, 3018, 3019, 3020, 3021, 3022, 3023, 3024, 3025, 3026, 3027, 3028, 3029, 3030, 3031, 3032, 3033, 3034, 3035, 3036, 3037, 3038, 3039, 3040, 3041, 3042, 3043, 3044, 3045, 3046, 3047, 3048, 3049, 3050, 3051, 3052, 3053, 3054, 3055, 3056, 3057, 3058, 3059, 3060, 3061, 3062, 3063, 3064, 3065, 3066, 3067, 3068, 3069, 3070, 3071, 3072, 3073, 3074, 3075, 3076, 3077, 3078, 3079, 3080, 3081, 3082, 3083, 3084, 3085, 3086, 3087, 3088, 3089, 3090, 3091, 3092, 3093, 3094, 3095, 3096, 3097, 3098, 3099, 3100, 3101, 3102, 3103, 3104, 3105, 3106, 3107, 3108, 3109, 3110, 3111, 3112, 3113, 3114, 3115, 3116, 3117, 3118, 3119, 3120, 3121, 3122, 3123, 3124, 3125, 3126, 3127, 3128, 3129, 3130, 3131, 3132, 3133, 3134, 3135, 3136, 3137, 3138, 3139, 3140, 3141, 3142, 3143, 3144, 3145, 3146, 3147, 3148, 3149, 3150, 3151, 3152, 3153, 3154, 3155, 3156, 3157, 3158, 3159, 3160, 3161, 3162, 3163, 3164, 3165, 3166, 3167, 3168, 3169, 3170, 3171, 3172, 3173, 3174, 3175, 3176, 3177, 3178, 3179, 3180, 3181, 3182, 3183, 3184, 3185, 3186, 3187, 3188, 3189, 3190, 3191, 3192, 3193, 3194, 3195, 3196, 3197, 3198, 3199, 3200, 3201, 3202, 3203, 3204, 3205, 3206, 3207, 3208, 3209, 3210, 3211, 3212, 3213, 3214, 3215, 3216, 3217, 3218, 3219, 3220, 3221, 3222, 3223, 3224, 3225, 3226, 3227, 3228, 3229, 3230, 3231, 3232, 3233, 3234, 3235, 3236, 3237, 3238, 3239, 3240, 3241, 3242, 3243, 3244, 3245, 3246, 3247, 3248, 3249, 3250, 3251, 3252, 3253, 3254, 3255, 3256, 3257, 3258, 3259, 3260, 3261, 3262, 3263, 3264, 3265, 3266, 3267, 3268, 3269, 3270, 3271, 3272, 3273, 3274, 3275, 3276, 3277, 3278, 3279, 3280, 3281, 3282, 3283, 3284, 3285, 3286, 3287, 3288, 3289, 3290, 3291, 3292, 3293, 3294, 3295, 3296, 3297, 3298, 3299, 3300, 3301, 3302, 3303, 3304, 3305, 3306, 3307, 3308, 3309, 3310, 3311, 3312, 3313, 3314, 3315, 3316, 3317, 3318, 3319, 3320, 3321, 3322, 3323, 3324, 3325, 3326, 3327, 3328, 3329, 3330, 3331, 3332, 3333, 3334, 3335, 3336, 3337, 3338, 3339, 3340, 3341, 3342, 3343, 3344, 3345, 3346, 3347, 3348, 3349, 3350, 3351, 3352, 3353, 3354, 3355, 3356, 3357, 3358, 3359, 3360, 3361, 3362, 3363, 3364, 3365, 3366, 3367, 3368, 3369, 3370, 3371, 3372, 3373, 3374, 3375, 3376, 3377, 3378, 3379, 3380, 3381, 3382, 3383, 3384, 3385, 3386, 3387, 3388, 3389, 3390, 3391, 3392, 3393, 3394, 3395, 3396, 3397, 3398, 3399, 3400, 3401, 3402, 3403, 3404, 3405, 3406, 3407, 3408, 3409, 3410, 3411, 3412, 3413, 3414, 3415, 3416, 3417, 3418, 3419, 3420, 3421, 3422, 3423, 3424, 3425, 3426, 3427, 3428, 3429, 3430, 3431, 3432, 3433, 3434, 3435, 3436, 3437, 3438, 3439, 3440, 3441, 3442, 3443, 3444, 3445, 3446, 3447, 3448, 3449, 3450, 3451, 3452, 3453, 3454, 3455, 3456, 3457, 3458, 3459, 3460, 3461, 3462, 3463, 3464, 3465, 3466, 3467, 3468, 3469, 3470, 3471, 3472, 3473, 3474, 3475, 3476, 3477, 3478, 3479, 3480, 3481, 3482, 3483, 3484, 3485, 3486, 3487, 3488, 3489, 3490, 3491, 3492, 3493, 3494, 3495, 3496, 3497, 3498, 3499, 3500, 3501, 3502, 3503, 3504, 3505, 3506, 3507, 3508, 3509, 3510, 3511, 3512, 3513, 3514, 3515, 3516, 3517, 3518, 3519, 3520, 3521, 3522, 3523, 3524, 3525, 3526, 3527, 3528, 3529, 3530, 3531, 3532, 3533, 3534, 3535, 3536, 3537, 3538, 3539, 3540, 3541, 3542, 3543, 3544, 3545, 3546, 3547, 3548, 3549, 3550, 3551, 3552, 3553, 3554, 3555, 3556, 3557, 3558, 3559, 3560, 3561, 3562, 3563, 3564, 3565, 3566, 3567, 3568, 3569, 3570, 3571, 3572, 3573, 3574, 3575, 3576, 3577, 3578, 3579, 3580, 3581, 3582, 3583, 3584, 3585, 3586, 3587, 3588, 3589, 3590, 3591, 3592, 3593, 3594, 3595, 3596, 3597, 3598, 3599, 3600, 3601, 3602, 3603, 3604, 3605, 3606, 3607, 3608, 3609, 3610, 3611, 3612, 3613, 3614, 3615, 3616, 3617, 3618, 3619, 3620, 3621, 3622, 3623, 3624, 3625, 3626, 3627, 3628, 3629, 3630, 3631, 3632, 3633, 3634, 3635, 3636, 3637, 3638, 3639, 3640, 3641, 3642, 3643, 3644, 3645, 3646, 3647, 3648, 3649, 3650, 3651, 3652, 3653, 3654, 3655, 3656, 3657, 3658, 3659, 3660, 3661, 3662, 3663, 3664, 3665, 3666, 3667, 3668, 3669, 3670, 3671, 3672, 3673, 3674, 3675, 3676, 3677, 3678, 3679, 3680, 3681, 3682, 3683, 3684, 3685, 3686, 3687, 3688, 3689, 3690, 3691, 3692, 3693, 3694, 3695, 3696, 3697, 3698, 3699, 3700, 3701, 3702, 3703, 3704, 3705, 3706, 3707, 3708, 3709, 3710, 3711, 3712, 3713, 3714, 3715, 3716, 3717, 3718, 3719, 3720, 3721, 3722, 3723, 3724, 3725, 3726, 3727, 3728, 3729, 3730, 3731, 3732, 3733, 3734, 3735, 3736, 3737, 3738, 3739, 3740, 3741, 3742, 3743, 3744, 3745, 3746, 3747, 3748, 3749, 3750, 3751, 3752, 3753, 3754, 3755, 3756, 3757, 3758, 3759, 3760, 3761, 3762, 3763, 3764, 3765, 3766, 3767, 3768, 3769, 3770, 3771, 3772, 3773, 3774, 3775, 3776, 3777, 3778, 3779, 3780, 3781, 3782, 3783, 3784, 3785, 3786, 3787, 3788, 3789, 3790, 3791, 3792, 3793, 3794, 3795, 3796, 3797, 3798, 3799, 3800, 3801, 3802, 3803, 3804, 3805, 3806, 3807, 3808, 3809, 3810, 3811, 3812, 3813, 3814, 3815, 3816, 3817, 3818, 3819, 3820, 3821, 3822, 3823, 3824, 3825, 3826, 3827, 3828, 3829, 3830, 3831, 3832, 3833, 3834, 3835, 3836, 3837, 3838, 3839, 3840, 3841, 3842, 3843, 3844, 3845, 3846, 3847, 3848, 3849, 3850, 3851, 3852, 3853, 3854, 3855, 3856, 3857, 3858, 3859, 3860, 3861, 3862, 3863, 3864, 3865, 3866, 3867, 3868, 3869, 3870, 3871, 3872, 3873, 3874, 3875, 3876, 3877, 3878, 3879, 3880, 3881, 3882, 3883, 3884, 3885, 3886, 3887, 3888, 3889, 3890, 3891, 3892, 3893, 3894, 3895, 3896, 3897, 3898, 3899, 3900, 3901, 3902, 3903, 3904, 3905, 3906, 3907, 3908, 3909, 3910, 3911, 3912, 3913, 3914, 3915, 3916, 3917, 3918, 3919, 3920, 3921, 3922, 3923, 3924, 3925, 3926, 3927, 3928, 3929, 3930, 3931, 3932, 3933, 3934, 3935, 3936, 3937, 3938, 3939, 3940, 3941, 3942, 3943, 3944, 3945, 3946, 3947, 3948, 3949, 3950, 3951, 3952, 3953, 3954, 3955, 3956, 3957, 3958, 3959, 3960, 3961, 3962, 3963, 3964, 3965, 3966, 3967, 3968, 3969, 3970, 3971, 3972, 3973, 3974, 3975, 3976, 3977, 3978, 3979, 3980, 3981, 3982, 3983, 3984, 3985, 3986, 3987, 3988, 3989, 3990, 3991, 3992, 3993, 3994, 3995, 3996, 3997, 3998, 3999, 4000.

(Signature)
BARNIKA CHATTOPADHYAY
Regd. Architect
New Town Kolkata Development Authority
Enrollment No. ANR/KA/19/0003

(Signature)
JAY PRAKASH BHARTI KUMAR AGRAWAL
B. Arch., A.I.A.
Reg. No. CA/1/1058
ARCHITECT (S. NO. - 224)

SIGNATURE OF ARCHITECT

CERTIFICATE OF GEO-TECHNICAL ENGINEER

IT IS CERTIFIED THAT THE COMPREHENSIVE GEO-TECHNICAL REPORT ON SOIL INVESTIGATION HAS BEEN PREPARED BY ME FOR DESIGN AND CALCULATION OF THE FOUNDATION BY ANALYZING THE SOIL SAMPLES FOR ESTIMATING THE BEARING CAPACITY OF THE SOIL ON WHICH FOUNDATION OF THE STRUCTURE WILL BE CONSTRUCTED.

I SHALL ALSO CHECK THE NATURE OF THE SOIL AFTER EXCAVATION AT SITE SO THAT FOUNDATION IS EXTENDED UP TO THE APPROPRIATE DEPTH THAT HAS BEEN PROPOSED IN THE GEO-TECHNICAL REPORT.

(Signature)
SIVAKANAR SETHI, B. Sc., I.C.E.
ENFORCEMENT NO. 018-800000/0010

SIGNATURE OF GEO-TECHNICAL ENGINEER

(Signature)
Subir Ranjan
B.Arch., M.C.E. (I.C.E.)
Reg. No. 31CA/55/0003
B.A.T.P.00-50

(Signature)
BARNIKA CHATTOPADHYAY
Regd. Town Planner
New Town Kolkata Development Authority
Enrollment No. TPER/KA/19/0002

(Signature)
Mainak Majumdar
B.C.E., M.C.E. (I.C.E.)
REG-15211 of CMC
REGISTERED CIVIL ENGINEER

SIGNATURE OF STRUCTURAL ENGINEER

TITLE (BLOCK-7C)
GROUND FLOOR PLAN & FIRST FLOOR PLAN

PROJECT:
PROPOSED ADDITION OF 6 NOS. (G+XIII) 1 NO. (G+XIV) 1 NO. (XV) STORED NEW BLOCKS WITH 6 NOS. (G+XIII) STORED EXISTING BLOCKS UNDER CONSTRUCTION IN RESIDENTIAL COMPLEX ON RAJARHAT MAIN ROAD (211 BUS ROUTE), AT MOULZA - RAIGACHI, J.I. NO. 12 IN R.S.L.R. DAG NOS. 615(P), 620, 621, 622, 623, 624, 625, 627, 628, 629(P), 630(P), 631(P), 632(P), 640, 641, 642, 643, 644, 645, 646, 647, 648, 649, 650(P), 651(P), 652(P), 653, 654, 655, 656, 657, 658(P), 659(P) & 698/734 RECORDED UNDER L.R. KHATAN NOS. 2022, 2023, 2024, 2025, 2193, 2194, 2195, 2196, 2197, 2198, 2199, 2200, 2201, 2202, 2203, 2204, 2205, 2206, 2207, 2208

ARCHITECT:
BARNIKA CHATTOPADHYAY
CIVIL/STRUCTURAL ENGINEER
MAINAK MAJUMDER
SIO-TECHNICAL ENGINEER
SAYANAL KUMAR MITRA
TOWN PLANNER/URBAN DESIGNER
BARNIKA CHATTOPADHYAY
STRUCTURAL REVIEWER
MAINAK MAJUMDER

Enrollment No: ACHR/NKDA/10/00003
Enrollment No: STER/NKDA/10/00019
Enrollment No: CTER-HDDO/09/00010
Enrollment No: FPER/NKDA/10/00022
Enrollment No: STR/NKDA/14/00001

STRUCTURAL DRAWINGS, STRUCTURAL
DESIGN CALCULATIONS & SOIL TEST
REPORT ARE NOT CHECKED AND KEPT
FOR RECORDS ONLY.

NEW TOWN KOLKATA DEVELOPMENT AUTHORITY
No Objection Certificate for

Function of Building Plan for Construction Purpose

Order No. 6276 (B)/NKDA/BPS-04(09)/2014

Date: 03 Nov 2015

Building Particulars: 0+6+13 storied Residential Building at Reg No.
620 to 625, 627, 628, 615 (P), 629 (P), 630 (P), 632 (P), 638 to 644,
650 (P), 651 (P), 652 to 659, 589/658 (P) & 639/234.

Mouza- Raigachi, J.L. No. 12, 24 P.S (N).

Note: The proposal is recommended for approval
subject to submission of Environment Clearance.

Sanjib & Apurva
22-15
Executive Officer
Rajarhat Panchayat Samity

Sayanti Majumder
Assistant Architect
New Town Kolkata Development Authority

S. Chatterjee
SUKRIT CHATTERJEE
Chief Architect
New Town Kolkata Development Authority